



State Road (SR) 5/US 1 Resurfacing, Restoration, and Rehabilitation (RRR) Project

From north of Southeast Fischer Street to north of Southeast Decker Avenue
In the City of Stuart and unincorporated Martin County
Martin County

Financial Project ID: 447649-1-52-01

Virtual Public Meeting
Wednesday, April 9, 2025

Virtual Public Meeting Orientation

Moderator & Presenter



Samantha Kayser
Community Outreach Specialist
The Corradino Group

Meeting Format

Presentation, Q&A Session

- 5 p.m. to 5:30 p.m.
- 5:30 p.m. to 6 p.m.

The Florida Department of Transportation is required to comply with various non-discrimination laws and regulations, including **Title VI of the Civil Rights Act of 1964.**

Public participation is solicited without regard to race, color, national origin, age, sex, religion, disability, or family status.

Persons wishing to express concerns about Title VI may do so by contacting either:

District Four

Florida Department of Transportation
District Four Title VI Coordinator

Sharon Singh Hagyan



(954) 777-4190,

Sharon.SinghHagyan@dot.state.fl.us

Tallahassee Office

Florida Department of Transportation
Statewide Title VI Coordinator

Stefan Kulakowski

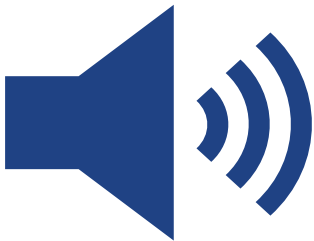


(850) 414-4742,

Stefan.Kulakowski@dot.state.fl.us

All inquiries or concerns will be handled according to FDOT procedure and in a prompt and courteous manner.

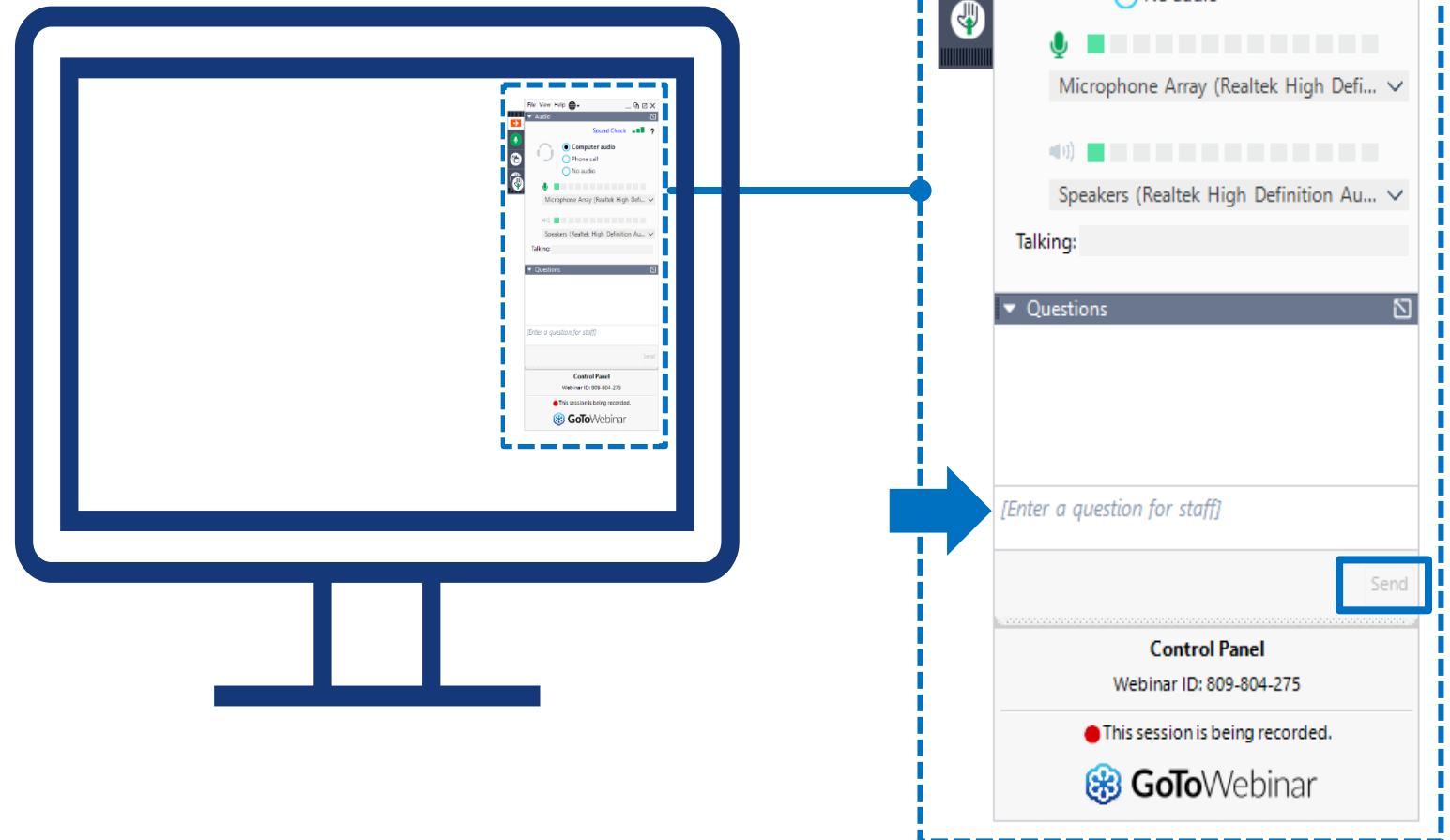
Virtual Public Meeting Orientation



- This Virtual Public Meeting is being recorded.
- All attendees **will remain muted** throughout the meeting.
- If you experience technical difficulties, please contact **GoTo Webinar Support at +1(833) 851-8340**.
- At the end of the presentation attendees are also welcome to submit any questions/comments using the GoTo Webinar Question Panel and a member of the team will respond during the question-and-answer portion. To request to speak, click the Raise Hand button on the Control Panel and unmute your microphone when your name is called.

Participating on GoTo Webinar

- If you would like to ask a question verbally, please click on the hand icon to be recognized.
- This meeting is being recorded and will be posted to www.d4fdot.com.



Meet the Team



Donald Larson

Construction Project Manager
FDOT District Four, Treasure Coast
Operations



Binod Basnet, P.E.

Design Project Manager
FDOT District Four



Etienne Bourgeois, P.E.

Senior Project Engineer
Gannett Fleming



Hans C. Ribbeck, P.E.

Engineer of Record
Ribbeck Engineering, Inc.



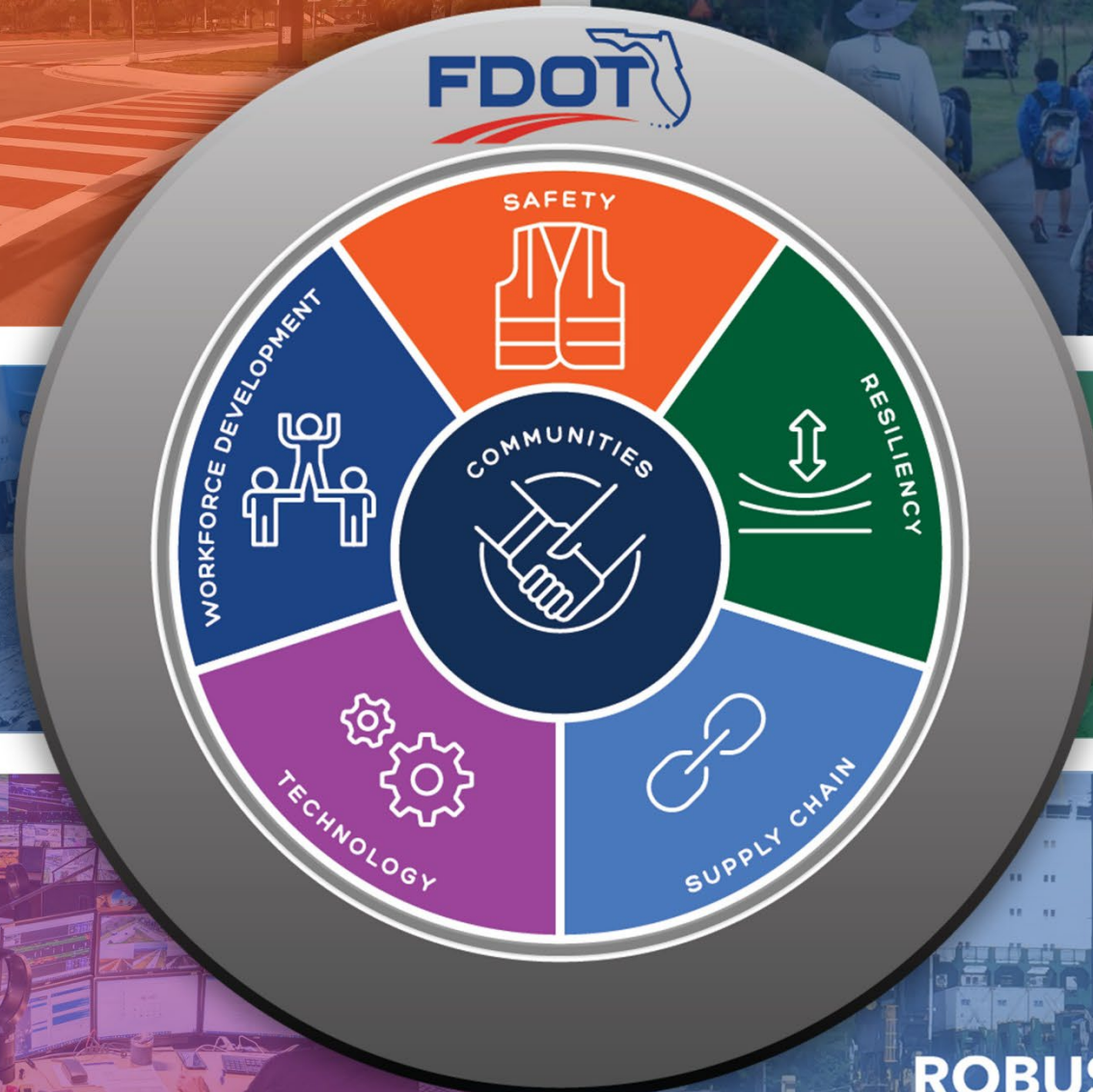
Benji Sotomayor

Project Administrator
Gannett Fleming



Zach Rose

Contractor
Timothy Rose Contracting, Inc.



2055 Florida Transportation Plan



SINGLE, OVERARCHING **PLAN**



GUIDES FLORIDA'S TRANSPORTATION **FUTURE**



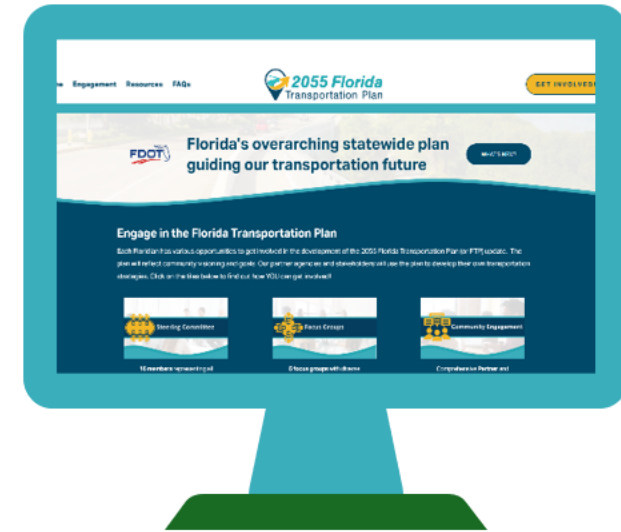
FOUNDATION FOR FLORIDA'S WORK PROGRAM



UPDATED EVERY **5 YEARS**



COLLABORATIVE EFFORT WITH **PUBLIC AND PRIVATE PARTNERS**



**Scan to
learn more!**



Get Engaged Today!

FloridaFTP.com

Project Limits



Project Overview

Purpose: To extend the pavement's service life through milling and resurfacing while enhancing roadway safety along the SR 5/US 1 corridor for motorists, bicyclists, and pedestrians.

Length: 1.724 miles

Contractor: Timothy Rose Contracting, Inc.

Construction Start: April 2025

Cost: \$7.5 Million

Estimated Completion: Summer 2026



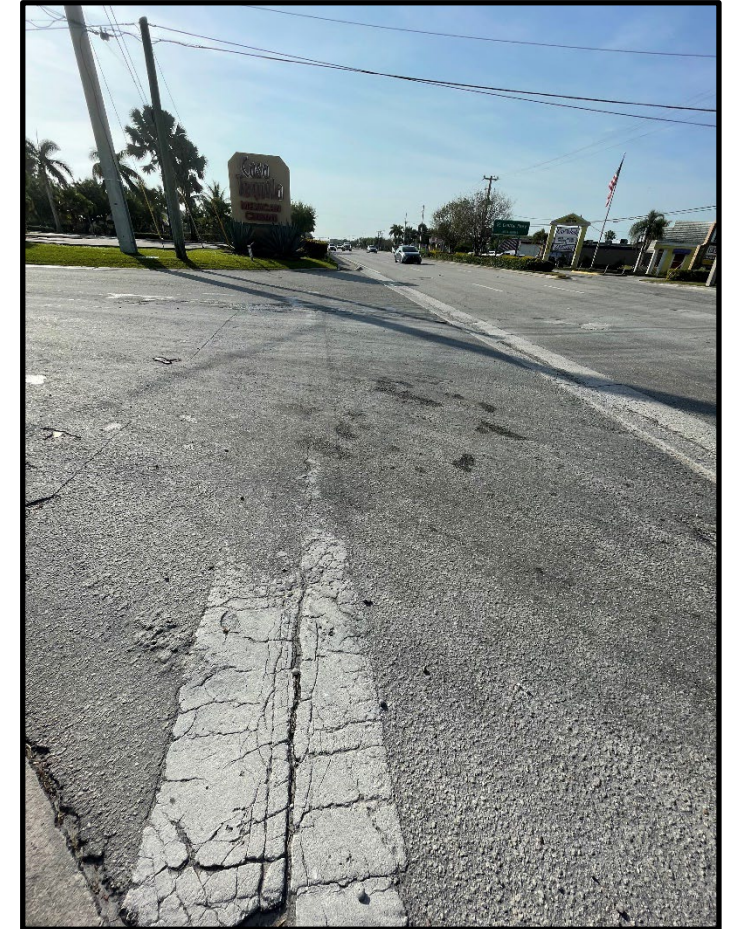
SR 5/US 1 at Southeast Fischer Street
looking north
(Pre-Construction)

Scope of Work

Roadway Improvements

Roadway Improvements

- Milling and resurfacing the existing roadway within the project limits to enhance safety and long-term resiliency
- Constructing new light poles with LED fixtures at signalized intersections to boost nighttime visibility
- Upgrading signage and pavement markings to enhance safety, functionality, and traffic operations



SR 5/US 1 at Southeast Decker
Avenue looking north
(Pre-Construction)

Scope of Work

Bicycle and Pedestrian Improvements

Bicycle and Pedestrian Improvements

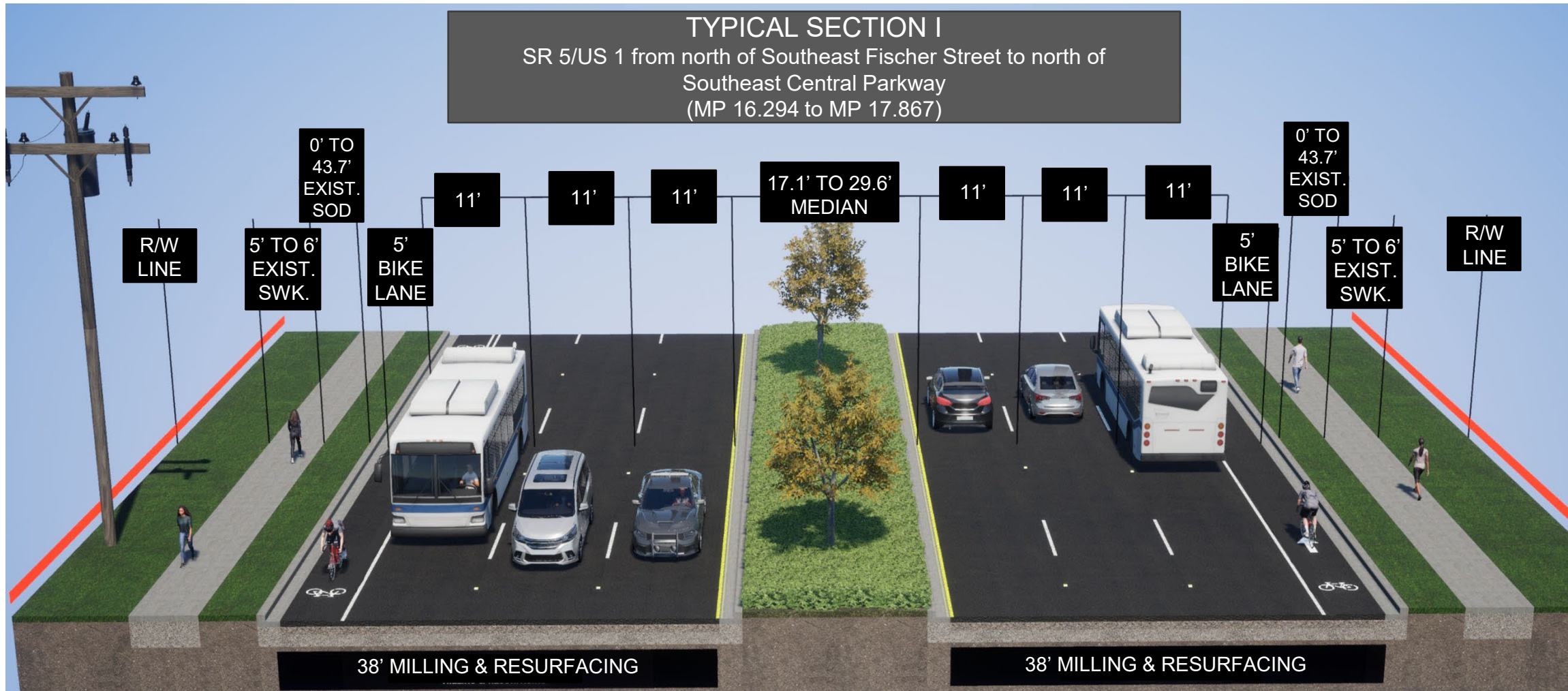
- Widening the bicycle lane by restriping it from 4 feet to 5 feet to increase safety
- Upgrading existing pedestrian signals at signalized intersections to improve push button accessibility
- Reconstructing existing sidewalk curb ramps throughout the project limits to enhance safety and connectivity for pedestrians



Northbound SR 5/US 1 at
Southeast Fischer Street
(Pre-Construction)

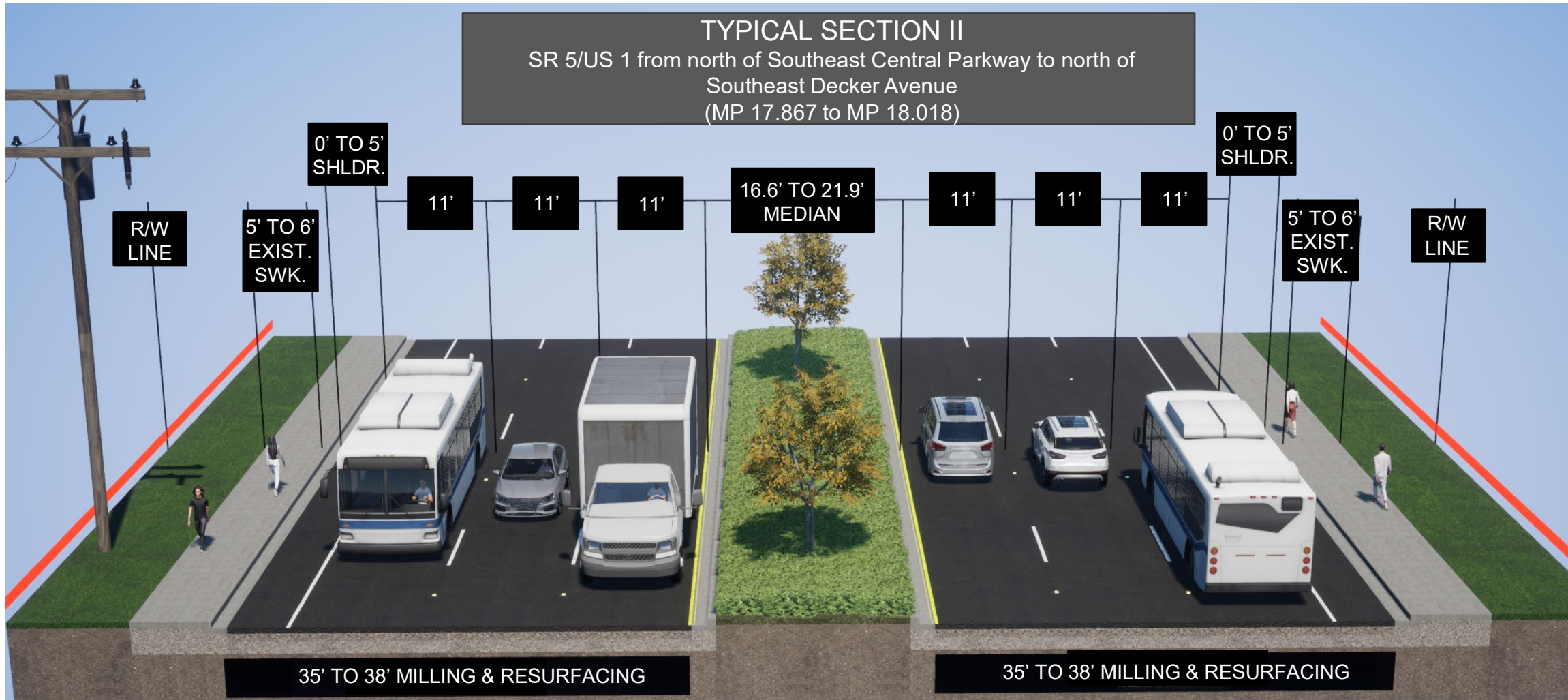
Typical Section

SR 5/US 1 from north of Southeast Fischer Street to north of Southeast Central Parkway



Typical Section

SR 5/US 1 from north of Southeast Central Parkway to north of Southeast Decker Avenue



Maintenance of Traffic:

- Single and double-lane closures on SR 5/US 1 are permitted nightly during the following timeframes:
 - 9:00 p.m. to 6:00 a.m. within 600 feet of a signalized intersection
 - 8:00 p.m. to 6:00 a.m. outside 600 feet from a signalized intersection
- Business, pedestrian, and residential access will be maintained at all times throughout construction
- Access to and from bus stops will be maintained

Detour to Martin County School Board South Entrance

In Phase 2 of construction, the left-turn lane on southbound SR 5/US 1 at Southeast Central Parkway will be closed to motorists nightly as needed, from 9:00 p.m. to 6:00 a.m., for median reconstruction work.

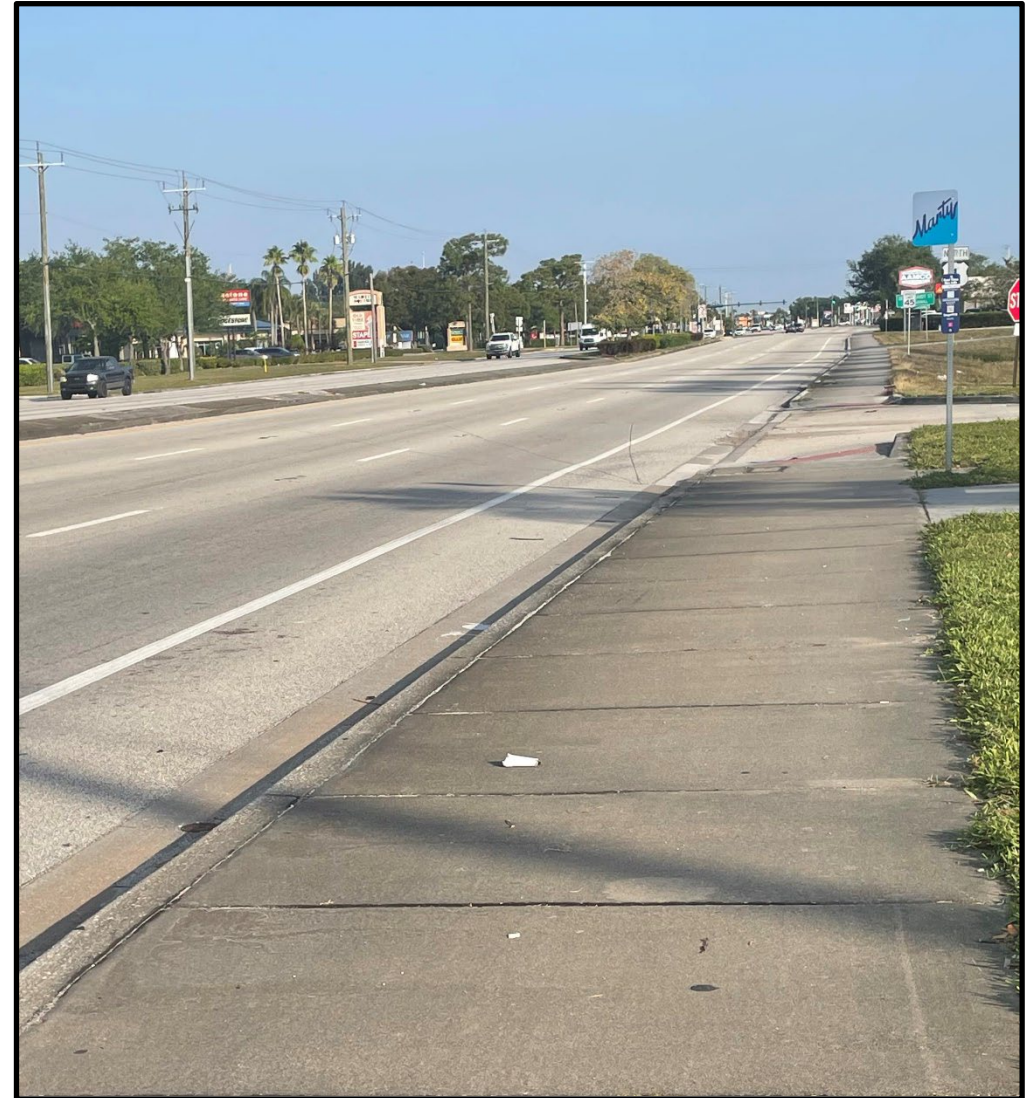
- Motorists will be detoured via southbound SR 5/US 1, make a U-Turn at the next median entrance onto northbound SR 5/US 1 to the Martin County School Board entrance



Construction Phases

Phase 1A:

- Reconstruct curb and gutter, sidewalk, curb ramps, and driveways on one side of the road at a time
- Install signage and sod
- Construct signal and lighting improvements

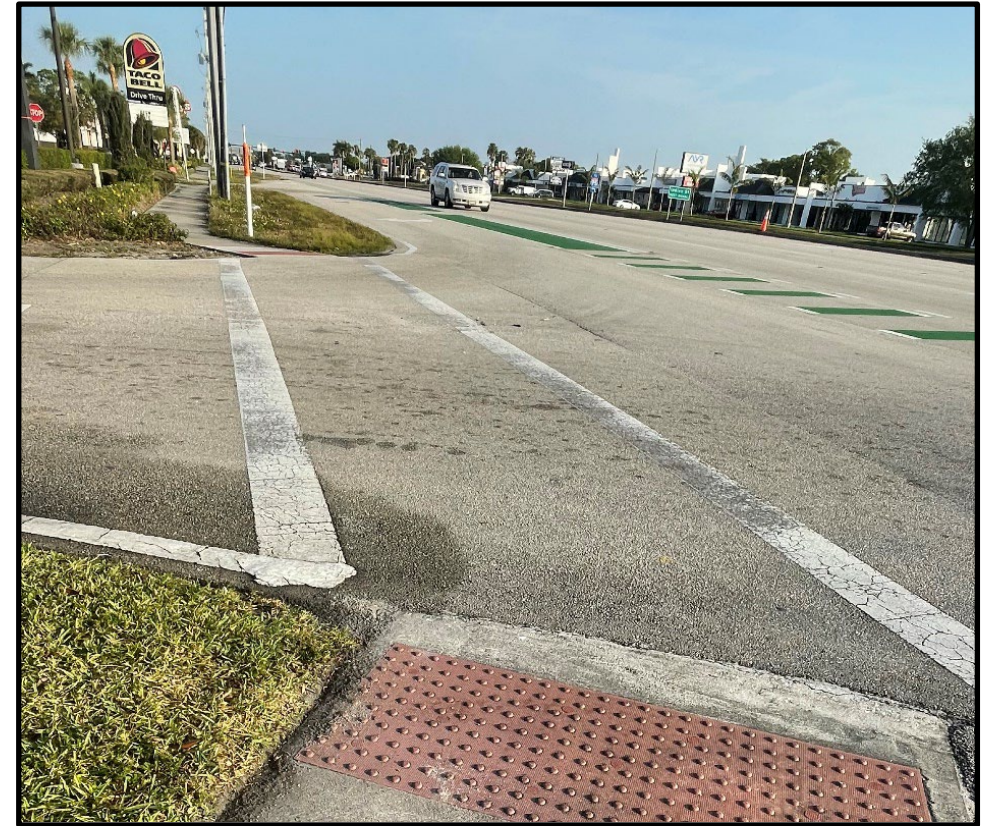


SR 5/US 1 at Indian Street looking south
(Pre-Construction)

Construction Phases

Phase 1B

- Reconstruct curb and gutter, sidewalk, curb ramps, and driveways on one side of the road at a time
- Install signage and sod
- Construct pedestrian signal and lighting improvements along northbound SR 5/US 1
- Reconstruct the pavement at the entrance to the Martin County School Board



SR 5/US 1 south of Southeast Fischer Street
looking south
(Pre-Construction)

Construction Phases

Phase 2:

- Install signage and reconstruct the median crossing at Southeast Central Parkway
- Construct median improvements on SR 5/US 1 at Southeast Central Parkway and implement temporary nighttime detour



The intersection of SR 5/US 1 at Southeast Central Parkway
looking west
(Pre-Construction)

Construction Phases

Phase 3:

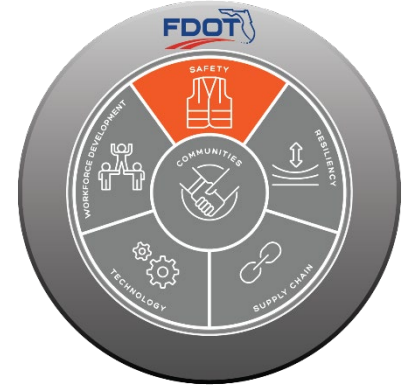
- Mill and resurface the roadway and around special manhole locations leaving at least one travel open
- Place structural course and then friction course asphalt
- Install pavement markings and Raised Pavement Markings (RPMs)



The intersection of SR 5/US 1 at Indian Street
looking west
(Pre-Construction)

Safety and Local Coordination

- **Public Safety is our Top Priority!**
 - **Work Zone Signage & Maintenance of Traffic**
 - Advanced warning and project signage will be placed throughout the construction corridor to alert the traveling public
 - **Local Agency & Stakeholder Coordination**
 - The project team will continue working closely with local stakeholders including local municipalities, schools, neighborhoods and other local agencies to ensure safety standards are met and impacts to the public are minimized in any way possible
 - **Emergency vehicles will be provided access at all times**



Lighted Message Board

Community Outreach

- To receive project specific updates please email skayser@corradino.com to be added to the distribution list
- A weekly press release will be distributed every Friday
- Additional project specific information can be found on the website

****All project updates will be posted to the District Four website.****

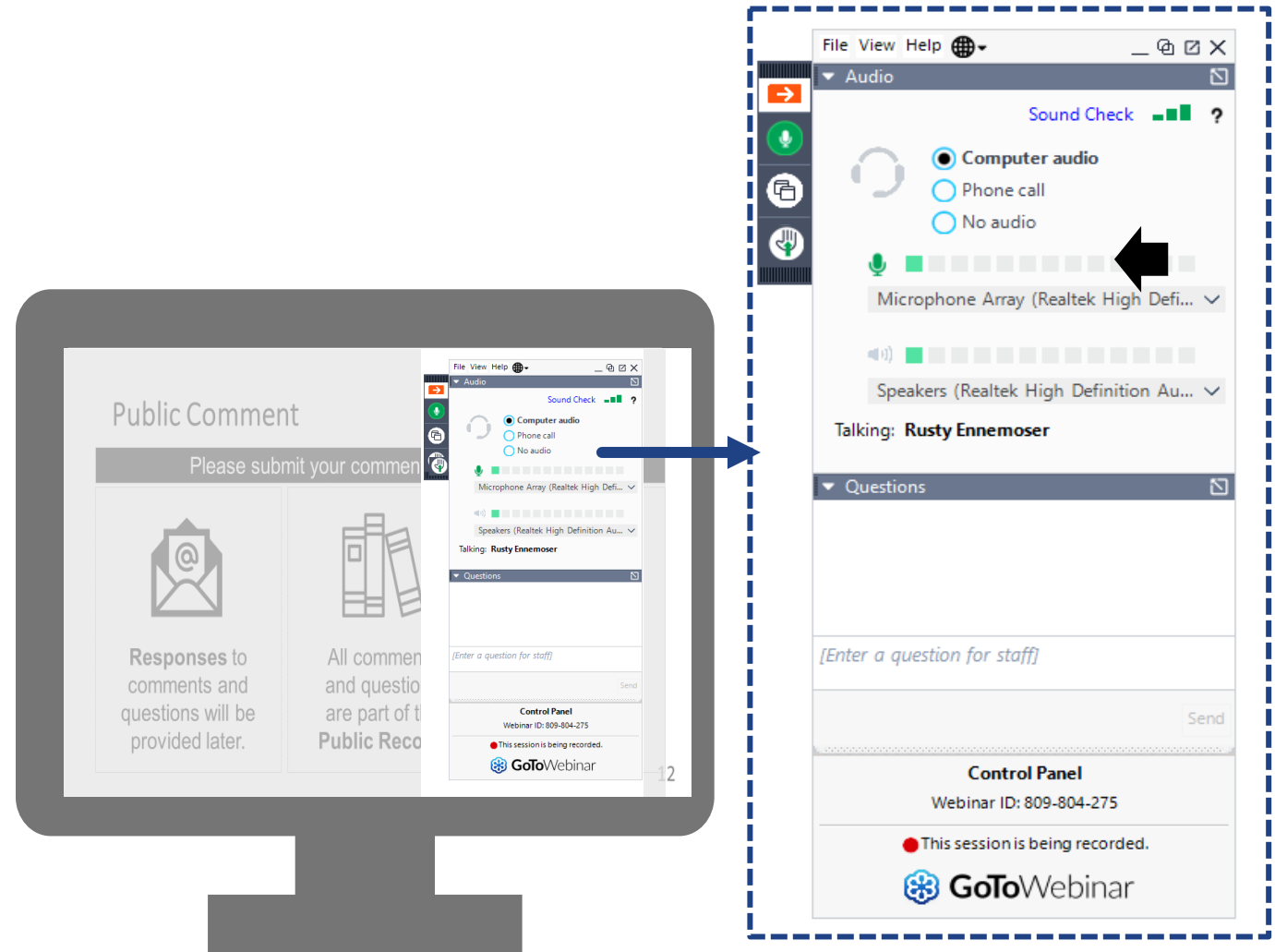


***Scan this QR code to go to the
District Four Website.***

www.d4fdot.com

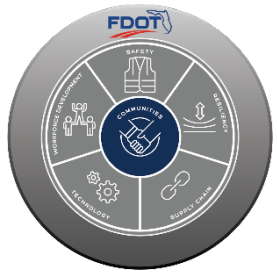
Questions and Answers

- Attendees are welcome to submit questions/comments using the GoToWebinar Question Panel



Contact Us

Throughout the project, questions or comments can be submitted via email or phone.



Samantha Kayser
Community Outreach Specialist



skayser@corradino.com



(772) 579-5479

Benji Sotomayor
Project Administrator



bsotomayor@GFNET.com



(786) 295-4407

Donald Larson
Construction Project Manager



donald.larson@dot.state.fl.us



(772) 828-1789

***This PowerPoint
presentation has been
uploaded to GoTo Webinar
for download.***

FDOT Safety Message





**Thank you for attending today's
Virtual Public Meeting!**